

PORTABLE SOLUTION

GETTING STARTED

PHASE ONE

Phase One A/S
Roskildevej 39
DK-2000 Frederiksberg
Denmark
Tel +45 36 46 01 11
Fax +45 36 46 02 22

Phase One U.S.
24 Woodbine Ave
Northport, New York
11768 USA
Tel +1 631-757-0400
Fax +1 631-757-2217

Notice

The name Phase One is a trademark of Phase One A/S.

The names Apple Macintosh, Sony Vaio and Microsoft Windows are all registered trademarks of their respective companies.

All specifications are subject to change without notice.

Phase One takes no responsibility for any loss or damage sustained while using their products.

This manual ©2003, Phase One A/S Denmark. All rights reserved. No part of this manual may be reproduced or copied in any way without prior written permission of Phase One.

Printed in Denmark.

Part #: 80027000

1 Contents

1 Introduction	2
2 Hardware overview	3
Package contents	3
IEEE 1394 Power Module and charging	3
Mounting the mounting plate on the Sony Vaio	4
Mounting the IEEE 1394 cable	6
Mounting the Sony Vaio in the belt	7
Practical details when using the belt	8
3 Vaio shortcuts	10
F-Key shortcuts	10
Browsing the Capture Collection	10
Power Management shortcuts	11
Stand By modes	11
Sleep Mode (Hibernate)	11
Switching screen resolution	11
4 Power Module and charger	12
Power Module description	12
Host power indicator	13
Batteries insertion	13
Charger setup instruction	14
Warning notes!	14

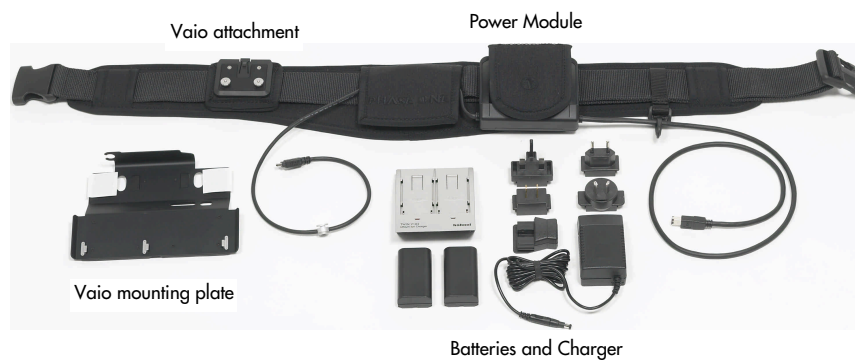
1 Introduction

The Phase One Portable Solution encourages all kinds of portable photographic uses from portraiture and on location shooting to capturing fast action and sports. This exiting product lets you work untethered when you are on your own with just as much control as if you were in the studio.

The functionality of the Phase One Portable Solution is well integrated with all the Phase One single shot camera backs. The Portable Solution belt functions both as a power unit for the camera back and as a holder for the Vaio computer.

The Portable Solution is based on the highly recognised Phase One camera back technology. The application software for Phase One single shot products is the same as for all products. The Capture One User Guide is a general manual for these products. This manual "Portable Solution Getting Started" covers only specific Portable Solution features and functionality.

2 Hardware overview



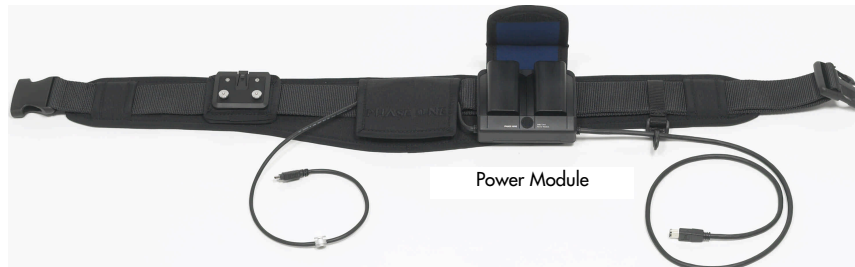
Package contents

The Phase One Portable Solution belt comes fully assembled, and ready to use.

Still there are a few things to do before you can actually use it with your Vaio and your Phase One digital camera back.

IEEE 1394 Power Module and charging

The belt utilises a Power Module carrying two 7.2 volt Lithium-ion batteries to power your Phase One digital back.



Portable Solution Getting Started

The first thing to do is to set up the charger and give the batteries a full charge (approximately 2,5 to 3 hours).

The charger has two red light indicators. While these are lit the battery is not fully charged, and should be left in the charger until the red light starts flashing or preferably turns off to gain a 5 % extra



(please read chapter 4, later in this manual)

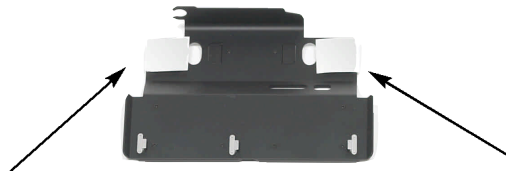
The charger can adapt to voltage within a range of 110 to 250 volt. It comes with an international set of source outlet adaptors, please select one that fits your outlet, and mount it by sliding it in from the top.

Mounting the mounting plate on the Sony Vaio

The Phase One Portable Solution belt can carry either a Sony Vaio PCG-U1 or a PCG-U3.

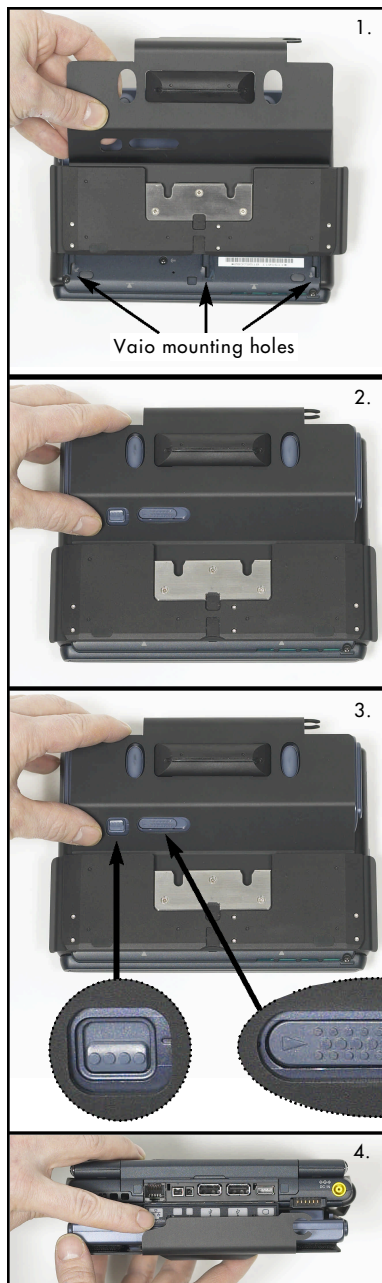


Before the Vaio can be mounted on the belt the Vaio mounting plate has to be mounted on the Vaio computer.



The mounting plate comes with two pieces of velcro mounted where the Sony battery should be attached

Portable Solution Getting Started



Start by removing the protection tape from the velcro.

1. Place the Vaio with the back facing upwards and position the mounting plate, aligning the three steel nubs with the three holes in the Vaio.

2. Slide the mounting plate nubs gently into the holes, taking care that the glue on the velcro does not touch the Vaio battery (place a finger in between) when the plate is in position press it firmly against the battery thereby gluing the velcro pieces to the battery.

3. Dismount the mounting plate again using the battery lock slider through the hole in the back. **(Don't try to pull off the plate from the velcro, as this can harm the holes in the Vaio, always detach the battery along with it).**

4. Open the port on the back of the Vaio exposing the IEEE 1394 connector, and gently slide the mounting plate and battery into place, again by using the large battery lock through the hole.

When correctly mounted the battery can be secured through the small hole in the mounting plate.

Now all the ports will remain exposed while the mounting plate is attached.

Portable Solution Getting Started

Mounting the IEEE 1394 cable

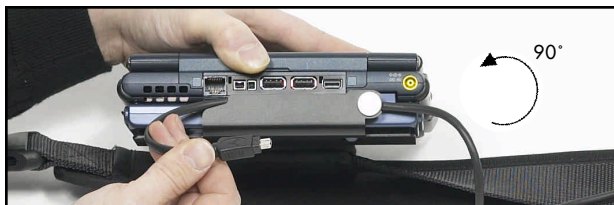
The Portable Solution cable comes with a cable lock attached approximately 25 cm from the Vaio connector.

When mounted correctly this cable lock will ensure that the cable stays in place at all times.

To mount the cable correctly using the cable lock mechanism. Slide the cable into the locking eye on the mounting plate as shown.



Turn the cable lock 90 degrees and make sure the cable is placed between the Vaio and the bottom mounting plate.



Turn over the cable and insert the connector in the Vaio.



Mounting the Sony Vaio on the belt

Simply hold the Vaio in your left hand with the battery facing downwards, align the nubs on the belt with the holes in the plate and press it down until you hear a click.



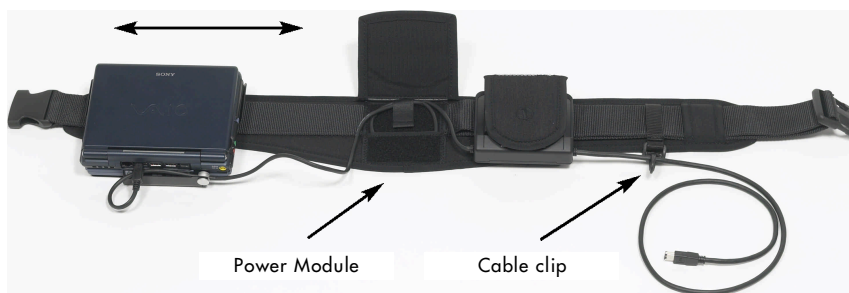
The locking mechanism is quickly released again by pushing the lock button on the top of the belt part of the mounting plate.



Portable Solution Getting Started

Practical details when using the belt

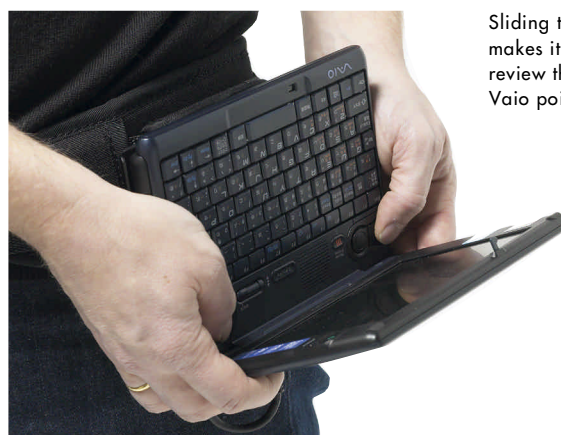
The Portable Solution belt is designed to be adjusted to fit your waist size, and can be extended at the male end of the quick lock buckle.



The Vaio can slide from side to side for maximum comfort in all situations.

The belt is equipped with a cable compartment between the Vaio and the Power Module where the IEEE 1394 cable can be rolled up thereby adjusted to fit the length of the belt.

At the camera end there is a cable clip that holds the cable and the strap for this clip can also be used to hold the cable, when no camera is connected.



Sliding the Vaio to the front makes it possible to quickly review the captures, using the Vaio pointer control buttons

Portable Solution Getting Started



Closing the Vaio and sliding it to the back facilitates working untethered, with a great freedom of movement.

When the camera is not connected, slide the IEEE 1394 cable under the cable clip strap.



3 Vaio Shortcuts

F-Key shortcuts

F1: Not in use

F2: Shift to collection.

F3: Previous function tab.

F4: Next function tab.

F5: Exposure warning.

F6: Expand preview area.

F7: Full-screen.

F8: horizontal Collection layout.

F9: Maximize preview.

F10: Not in use.

F11: Toggle between iso-settings .

(Set in preferences / Power and Portability tab).

Browsing the Capture Collection

Use the Left and Right arrow key to browse the Capture Collection.

Use the Home key (Fn + Left arrow key) to go to the first capture in the capture collection.

Use the End key (Fn + Right arrow key) to go to the last capture in the capture collection.

Power Management shortcuts

Automatic Gray Balancing

Use Ctrl - w to make an auto gray balancing in the Capture One Software.

Stand By mode

Press the Power-button, the Vaio goes into standby-mode.
Power down time ~ 3sec.

Press any key and the Vaio comes back to normal operation.
Power up time ~ 3sec.

Use Stand By mode for minimal power consumption and fast power up/down.

Sleep Mode (Hibernate)

Press (Fn + F12) and the Vaio goes into sleep mode.
Power down time ~ 20sec.

Press the Power-button and the Vaio comes back to normal operation. Power up time ~ 20sec.

This setting uses no power consumption at all.

Note: to use the Stand By mode or Sleep Mode you need to disconnect the camera or turn of the Power Module.

This is to ensure that the computer does not go into sleep mode when working with a camera connected.

Switching screen resolution

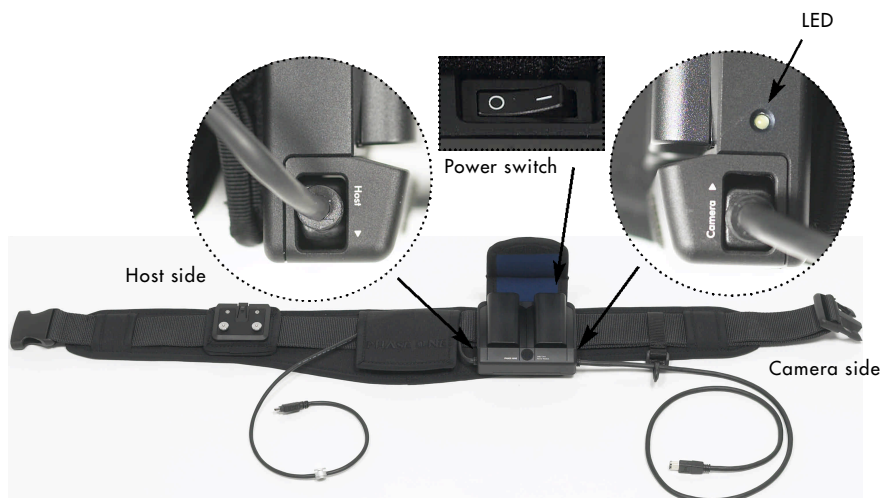
The Vaio screen resolution is per default set to 1024 x 768. This can be changed by pressing the Zoom-In button. When using a 6 megapixel camera back use a setting of 800 x 600 pixels and hit the F9 - key to Maximize the preview.

4 Power Module and Charger

Power Module description

The Power Module is equipped with an on/off switch placed right under the hood.

It has also a green LED on the Camera side which when lid indicates that the power is on.

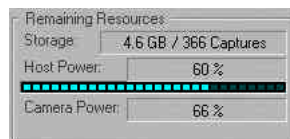


The arrows beside the cable connectors indicates that the round side of the IEEE 1394 connector should be facing this direction.

Always leave the Power Module switched of when it is not in use.

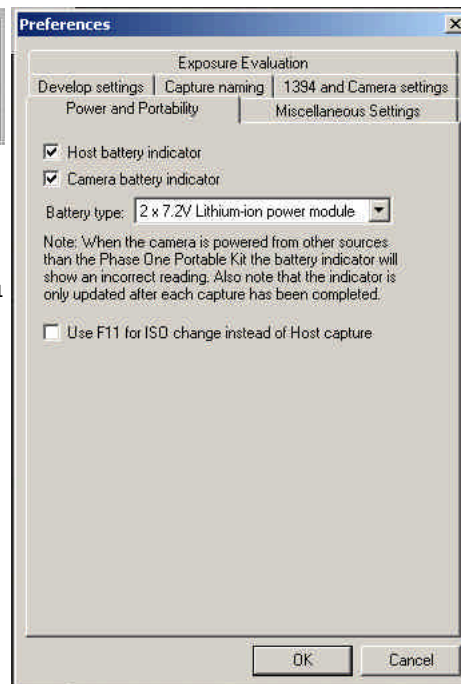
Host power indicator

The Capture One application can be set up to show both host power and camera power .



To be able to see the remaining battery of the Power Module, you will have to tell the application, what type of batteries it is using.

In the Preferences Power and Portability Tab select "Camera battery indicator" and select "2 x 7.2V Lithium-ion power module".



The power meter is updated whenever an image is captured so to get an exact reading you have to make a capture.

Batteries insertion

Insert the batteries with the contacts facing down and slide the battery fully down into the contacts.

Disconnect the batteries again from the charger or Power Module by pressing the battery slightly against the unit, and at the same time sliding the battery up and lift it off.

Portable Solution Getting Started

Charger setup instruction

Connect the Twin V102 with mains adaptor.

Pull out the foldaway leg.

Insert the battery. The LED for the battery will light up if the battery is correctly connected.

The LED for the second battery may not light up immediately when the battery is connected. If this battery is only partially discharged leave the battery connected, the LED will light up later.

Permanent lighting LED indicates fast charge, when the LED starts flashing the battery is practically full and can be used. If the battery is left in the charger for as long as the LED is still flashing. 5% extra capacity can be gained. All charging is finished when the LED turns off with the batteries connected.

Warning notes!

Only use original mains adaptor 12 V DC.

Never apply excessive force when connecting the batteries.

Keep all contacts clean.

Do not force down any of the contacts.

Do not short cut the contacts.

Never store the batteries connected to a charger for an extensive period of time.

Do not expose to heat or naked flame.

Do not dismantle or carry out any alteration to the product.